

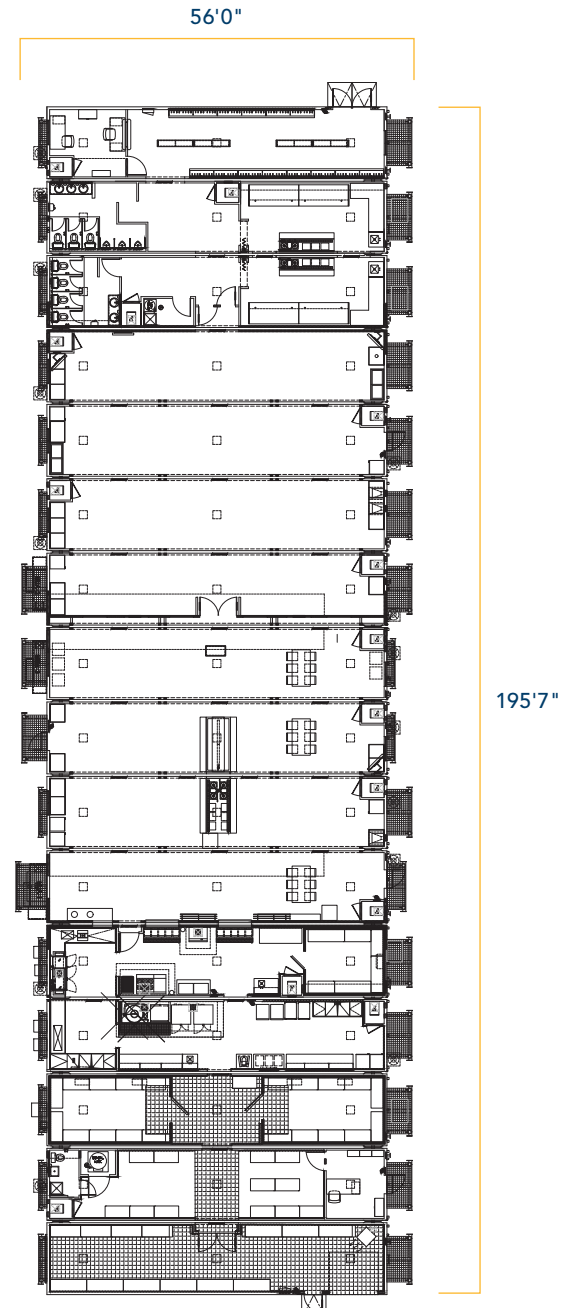
// 16-UNIT  
**KITCHEN, DINER,  
 RECREATION FACILITY (KDR)**

**SAMPLE UNIT SPECIFICATIONS**

- Food production and food storage capacity to serve up to 550-600 people<sup>1</sup>
- Diner comfortably seats 220 people per sitting<sup>1</sup>
- Male and female washrooms
- Large boot room at main entrance
- Office space
- Walk-in freezer and walk-in cooler
- Engineered for extreme climates
- Ability to complex with other equipment and corridors to create temporary fleet lodges

**SAMPLE UNIT DIMENSIONS**

- 16-UNIT: 56'0" x 195'x7"



NOTES:

<sup>1</sup> Capacity dependent on unit configuration.

<sup>2</sup> All layouts and renderings are conceptual representations only and subject to variances.