



CIVEO

Stay Well. Work Well.

civeo.com

Service

- Facility maintenance and service technicians
- Cleaning and housekeeping
- Fresh water and sewage hauling services
- General oilfield hauling services
- Pilot car services



Rentals

For short-term or temporary needs, we lease a variety of modular facilities, including:

- Wellsite living quarters
- Kitchens, diners & recreation units
- Wellsite office complexes
- Water and wastewater treatment plants
- Command centers
- Mudrooms, washrooms and chemical toilets
- Laundry and lounge units
- Satellite TV systems & hardware
- Bit sheds, trash bins
- Walk-in coolers & freezers

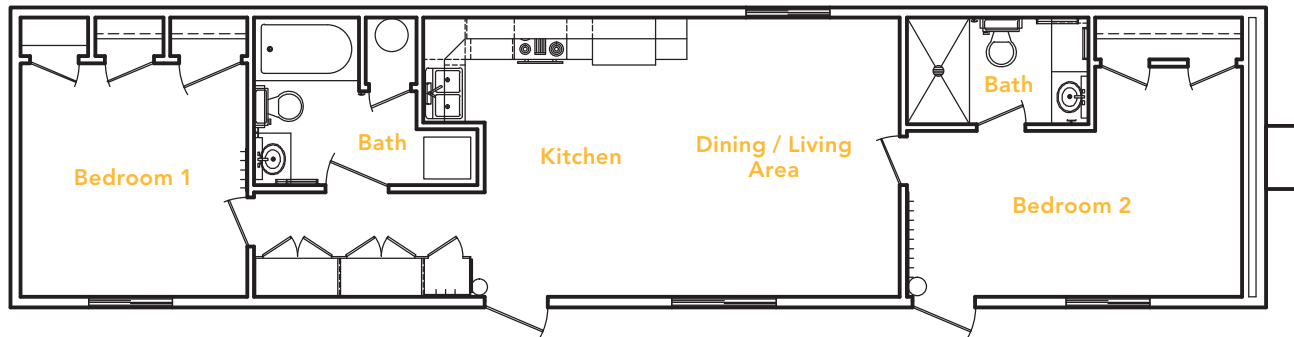
Living quarters

Our living quarters offer a relaxing environment to unwind after a long day. Our bedrooms welcome you with the comforts of home – pillow top mattresses, fresh linens and ample storage. Our stand-alone living quarters offer spacious accommodations, workspace and living amenities all under one roof – our home is your home.



2 Bedroom, 2 Bathroom (840 ft²)

14'-0" x 65'-0" skid



FEATURES

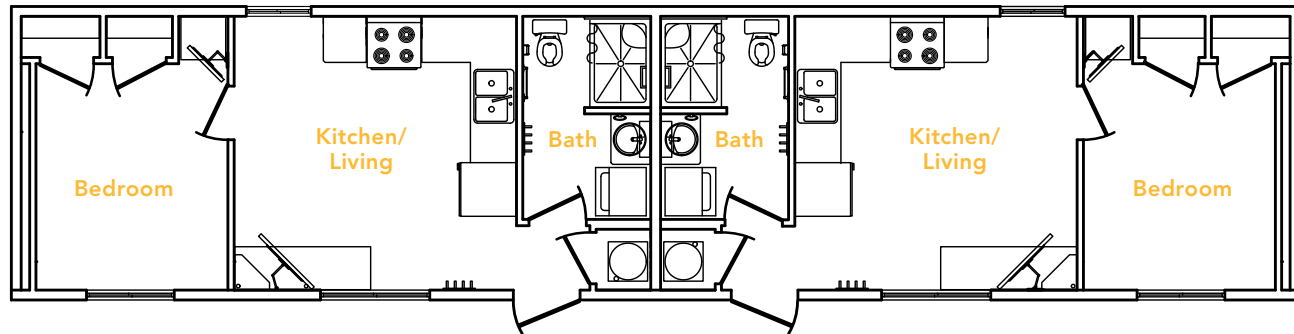
- One suite (single or double occupancy) with 3-piece bathroom
- One bedroom (single or double occupancy)
- One bathroom with jetted jacuzzi tub
- Living area with couch and recliner
- Satellite TV systems & hardware
- Personal temperature control in each room
- Walls engineered to reduce noise transfer
- Customizable to accommodate more sleeping space and less work space
- Stacked laundry
- Full kitchen
- Lockable storage



©Civeo. Drawings are for discussion purposes only. Facility layouts and features may vary. No unauthorized distribution or duplication of this drawing is permitted without expressed written consent.

Double Ender (840 ft²)

14'-0" x 65'-0" skid



FEATURES

Two separate suites each containing:

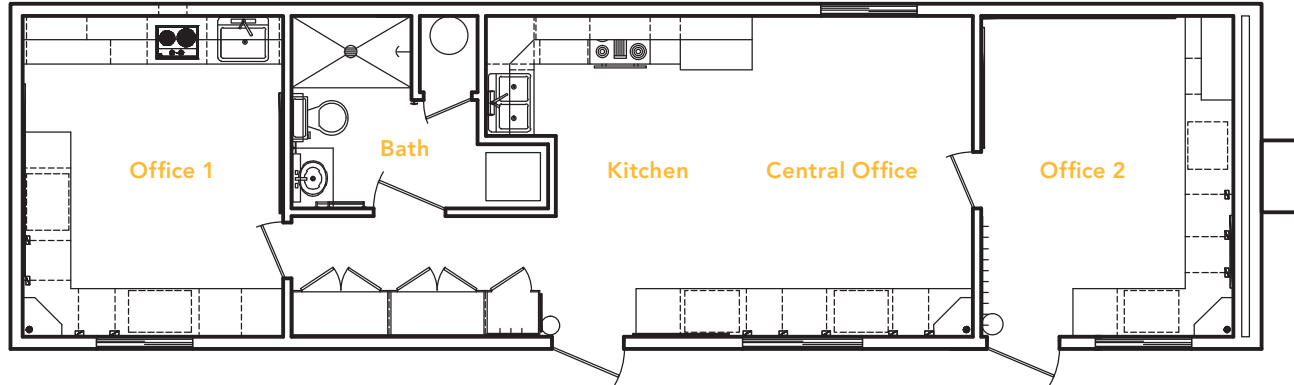
- One private bedroom (single or double occupancy)
- One three-piece bathroom
- In-suite workstation
- Satellite TV systems & hardware
- Stacked laundry
- Full kitchen
- Personal temperature control in each room
- Walls engineered to reduce noise transfer
- Customizable to accommodate more sleeping space and less work space
- Lockable storage



©Civeo. Drawings are for discussion purposes only. Facility layouts and features may vary. No unauthorized distribution or duplication of this drawing is permitted without expressed written consent.

Command Center

14'-0" x 57'-0" skid



FEATURES

- Office 1 has engineers' sink and cooker; under the sink has outside access for samples
- Office 2 has two workstations & separate entrance
- Central office has two additional workstations
- One bathroom with chemical eye wash & shower
- Personal temperature control in each room
- Walls engineered to reduce noise transfer
- Ability to customize units to meet unique client needs
- Satellite TV systems & hardware
- Stacked laundry
- Full kitchen
- Storage



©Civeo. Drawings are for discussion purposes only. Facility layouts and features may vary. No unauthorized distribution or duplication of this drawing is permitted without expressed written consent.

Contact information and office locations:

Casper, WY 307.472.1943

Cheyenne, WY 307.635.1313

Dickinson, ND 701.483.1640

Englewood, CO 303.357.4910

Grand Junction, CO 970.242.9561

Vernal, UT 435.789.0872





Stay Well. Work Well.

civeo.com

