

// USCG 12 X 40 12-PERSON SLEEPER OFFSHORE

UNIT FEATURES

- (3) Separate Dorm Rooms
- (2) Bunk Beds per Dorm Room with Privacy Curtains & Flame Retardant Innerspring Mattresses
- (4) Personnel Lockers per Room
- (3) Wash Basins with Vanities
- (2) WC Stalls (2) 36" Shower Stalls
- (2) 3 ton HVAC Heating & Cooling Systems
- (2) High Efficiency Water Heaters
- (12) Complete Linen & Bedding Sets

UNIT DIMENSIONS

- 40'-2" x 12'-0"

UNIT WEIGHT

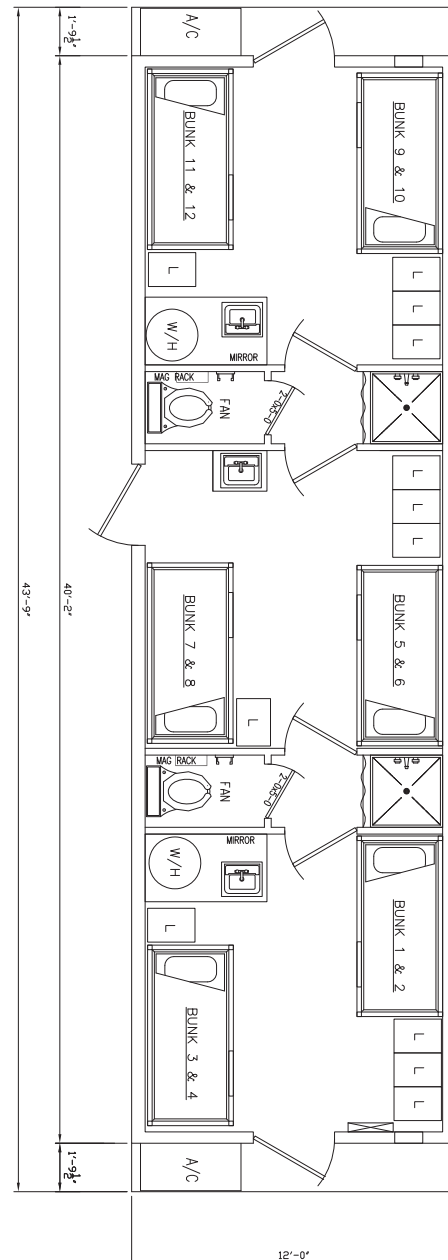
- 42,000

NOTE:

United States Coast Guard Approved Units

Civeo also designs and fabricates USCG/ABS/OSV/DNV Approved Units in the following layouts and styles:

- Galley
- Diner
- Laundry
- Bath
- Combination Units & Customized Units



NOTE: All layouts and renderings are conceptual representations only and subject to variances.