

// USCG 12 X 27 8-PERSON SLEEPER OFFSHORE

UNIT FEATURES

- (2) Separate Dorm Rooms
- (2) Bunk Beds per Room with Privacy Curtains & Flame Retardant Innerspring Mattresses
- (4) Personnel Lockers per Room
- (2) Wash Basins with Vanities
- (1) WC (1) 36" Shower Stall
- (1) 3 ton HVAC Heating & Cooling System
- (1) High Efficiency Water Heater
- (8) Complete Linen & Bedding Sets

UNIT DIMENSIONS

- 27'-0" x 12'-0"

UNIT WEIGHT

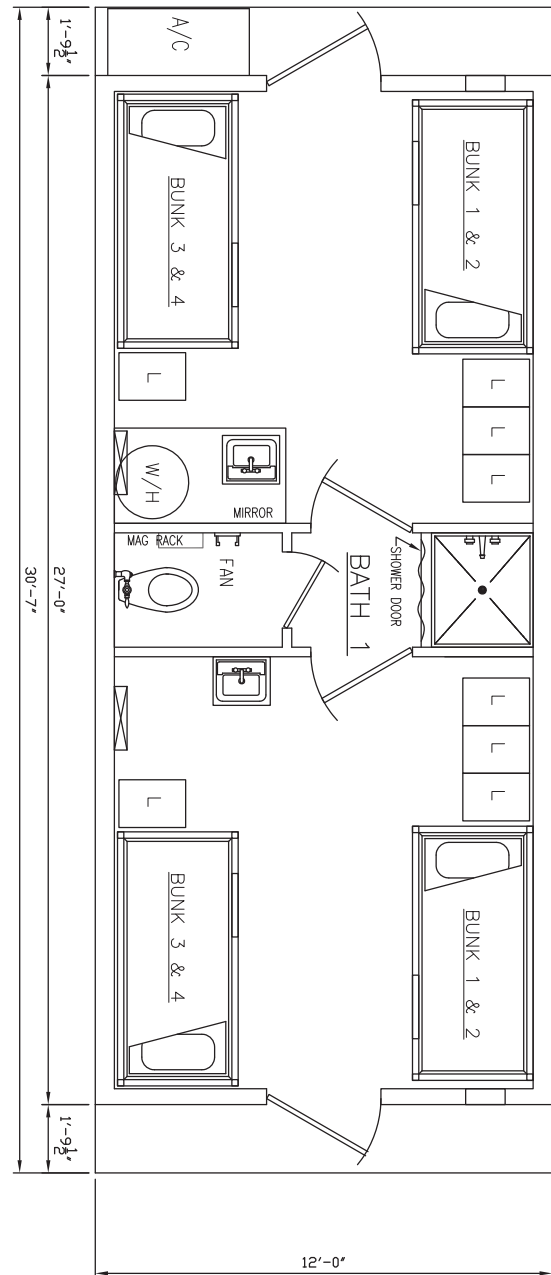
- 33,250

NOTE:

United States Coast Guard Approved Units

Civeo also designs and fabricates USCG/ ABS/OSV/DNV Approved Units in the following layouts and styles:

- Galley
- Diner
- Laundry
- Bath
- Combination Units & Customized Units



NOTE: All layouts and renderings are conceptual representations only and subject to variances.