



// **KILLDEER LODGE**
FACILITY SPECIFICATIONS & AMENITIES OVERVIEW



CONTENTS

- 3 Background
- 4 Facilities Overview
- 5 Common Area Amenities
- 8 Kitchen & Dining Overview
- 14 Dormitory Configurations
- 16 Utilities Infrastructure
- 17 Relocation Support

Note: The following is a high-level visual overview to provide contextual references for the facility and its amenities. Technical drawings and specifications can be made available on request.

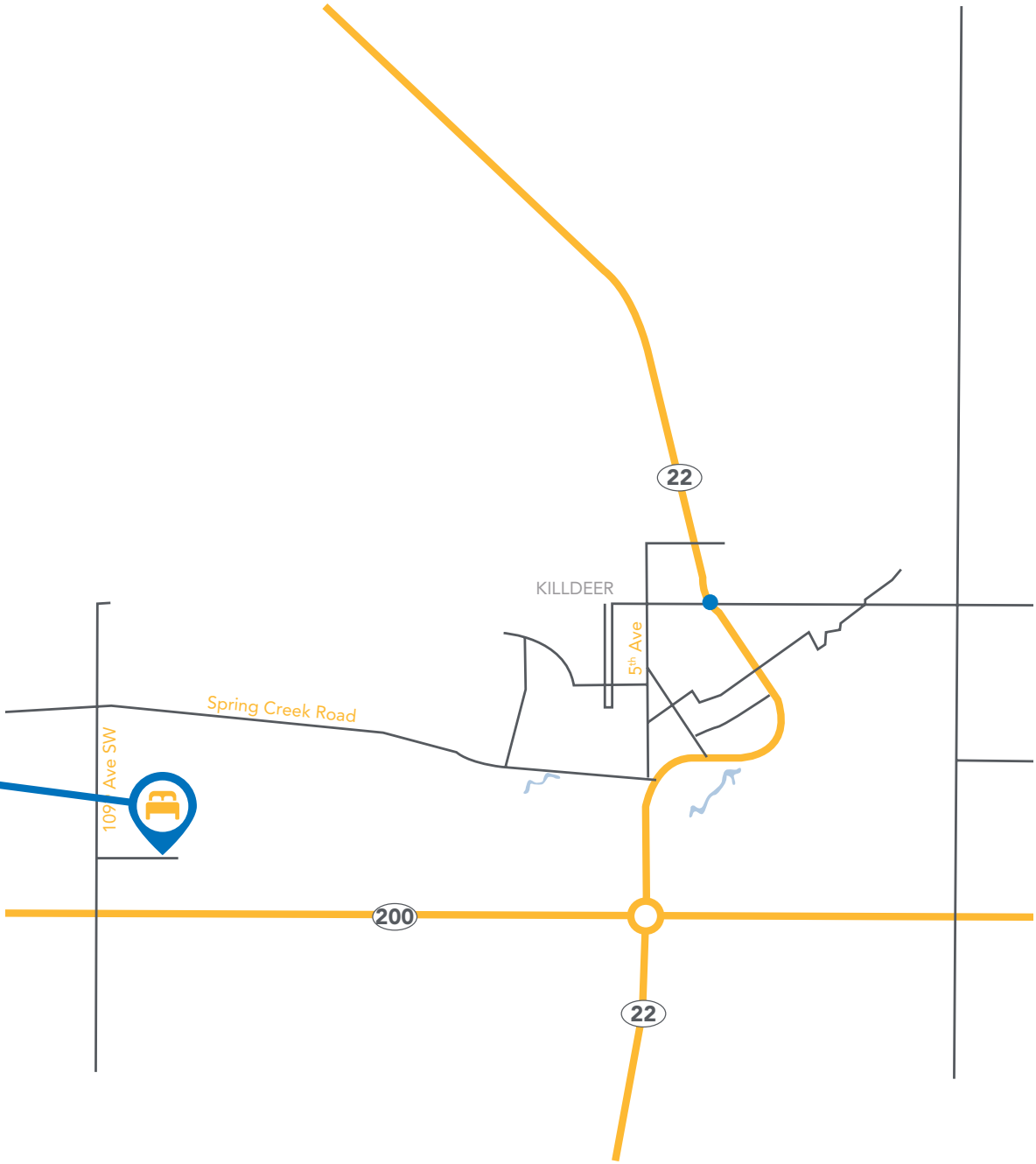
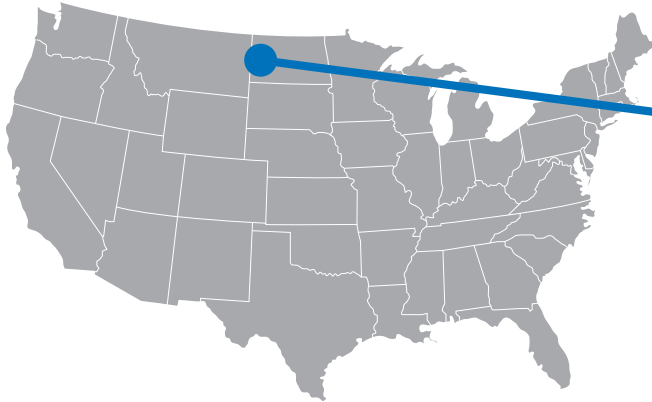
Relocation Support

In addition to the sale of lodge assets, Civeo can also provide scope of works to support the dismantle, trucking, border customs, installation, maintenance, and ongoing servicing at project sites anywhere in North America.

BACKGROUND










Capacity: 235 guest rooms
Location: Killdeer, North Dakota, USA

Located approximately two miles west of Killdeer, this workforce accommodations facility is comprised of a network of modular structures that are complexed together to provide lodging and lifestyle amenities for people living and working away from home. Due to its modular construction, the majority of this facility can now be relocated to welcome workers at its next project site.





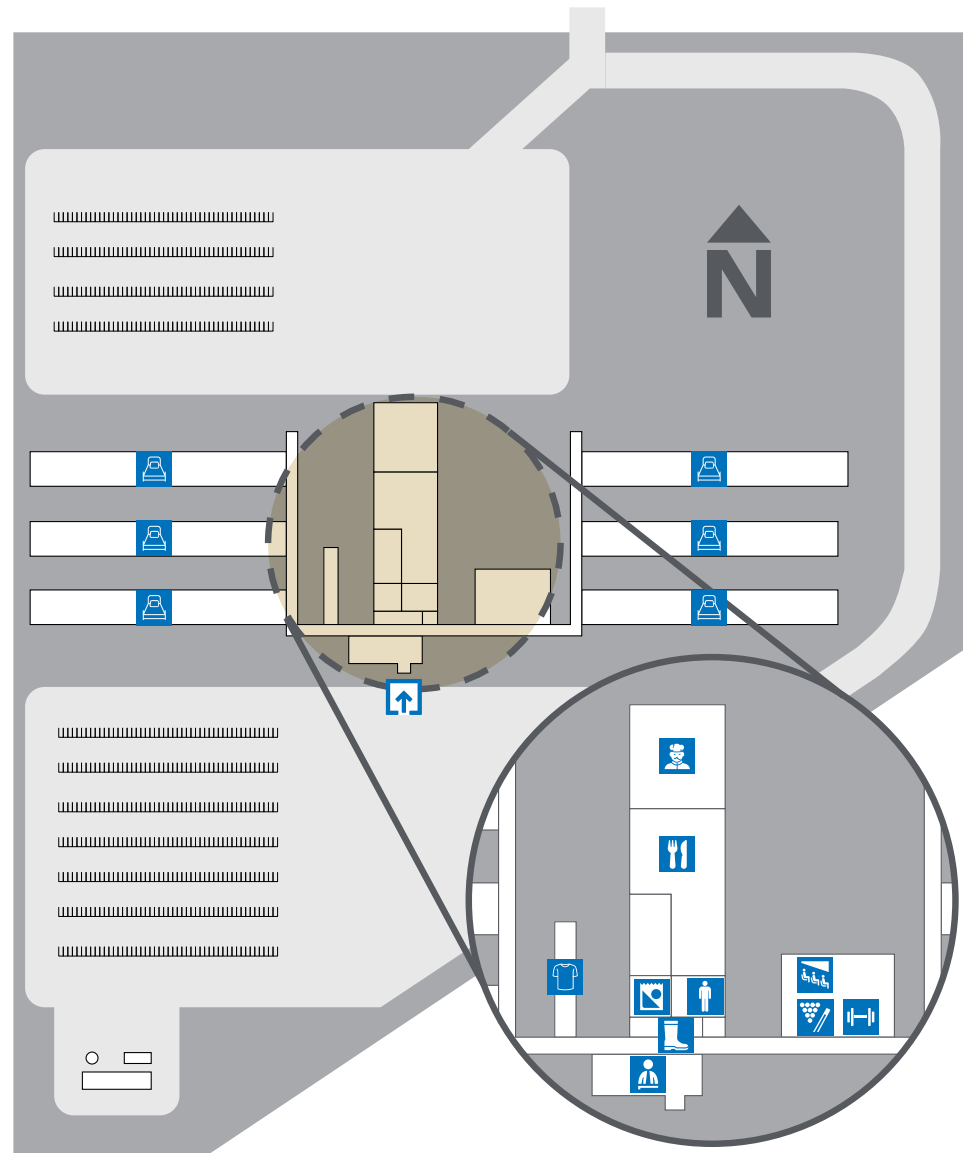
FACILITIES OVERVIEW

COMMON AREA AMENITIES

-  Lobby, Reception, and Admin Area
-  Commercial Kitchen
-  Dining Room
-  Bag-Up Room
-  Fitness Area
-  Games Area
-  Theatre Area
-  Laundry Facilities
-  Boot Room

DORMITORIES

-  235 total guest rooms
-  Four guest room configurations
 - Semi-Private Rooms (120 ft²)
 - Standard Suite (131 ft²)
 - Executive Suite (226 ft²)
 - Wheelchair Accessible Suites (226 ft²)



COMMON AREA AMENITIES

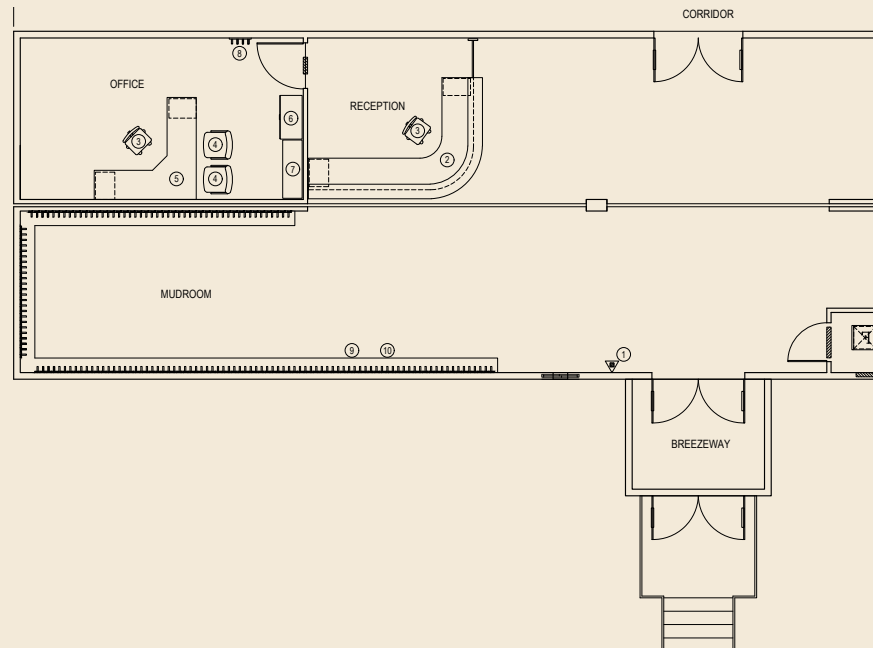
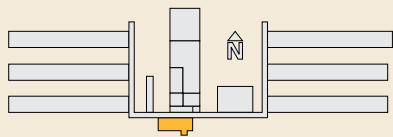
LOBBY, RECEPTION, ADMINISTRATION COMPLEX

Features & Specifications*

- 1,432 ft²
- 2-unit configuration
- Mill work reception desk
- Administration office
- Mudroom
- Breezeway entrance

*Comprehensive listing of features, furnishings, and equipment with detailed specifications available on request.

Floorplan





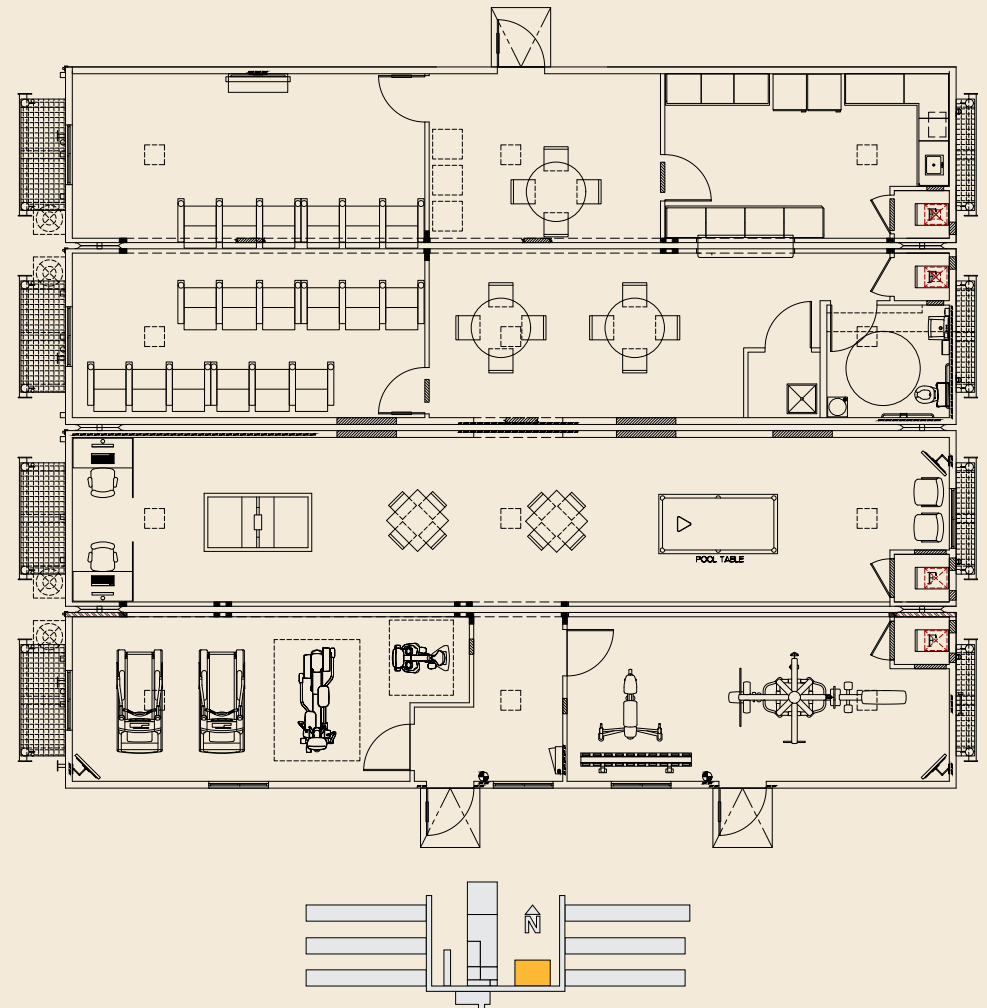
FITNESS & RECREATION CENTRE

Features & Specifications*

- 2,915 ft²
- 4-unit configuration
- Exercise equipment
- Games tables
- Theatre seating
- Accent chairs
- Computer stations

*Comprehensive listing of features, furnishings, and equipment with detailed specifications available on request.

Floorplan





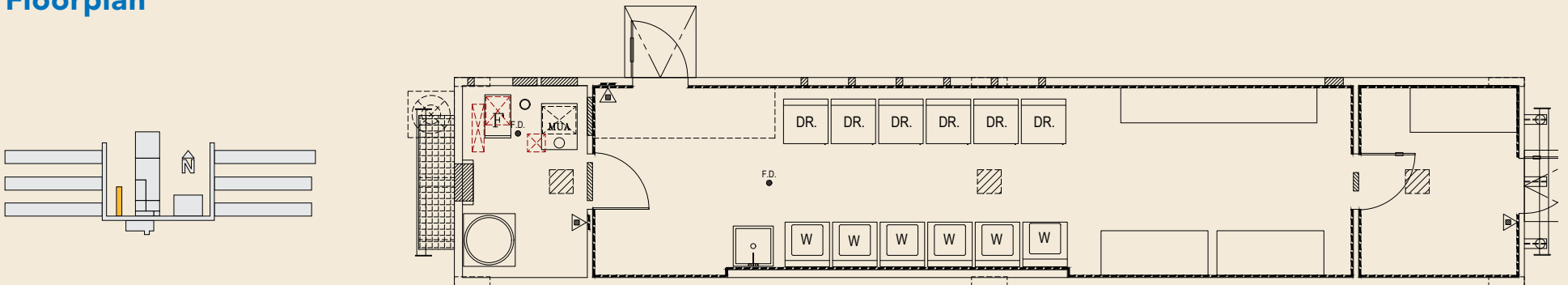
LAUNDRY

Features & Specifications*

- 700 ft²
- 1-unit configuration
- Six (6) washers
- Six (6) dryers
- Wash basin
- Folding stations
- HVAC

*Comprehensive listing of features, furnishings, and equipment with detailed specifications available on request.

Floorplan



KITCHEN & DINING OVERVIEW

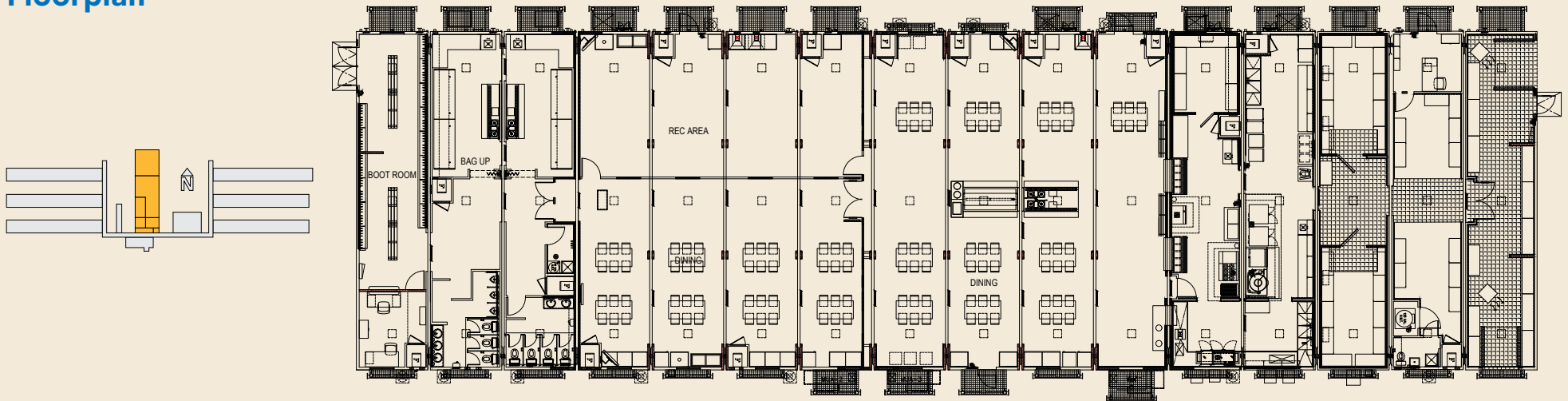
KITCHEN/DINER COMPLEX

Features & Specifications*

- 10,952 ft²
- 16-Unit
- Single story
- Commercial Kitchen
- Dining Room
- TV/Rec Area
- Boot Room
- Office
- Bag-Up Room
- Washroom Facilities (separate male/female)

**Comprehensive listing of features, furnishings, and equipment with detailed specifications available on request.*

Floorplan





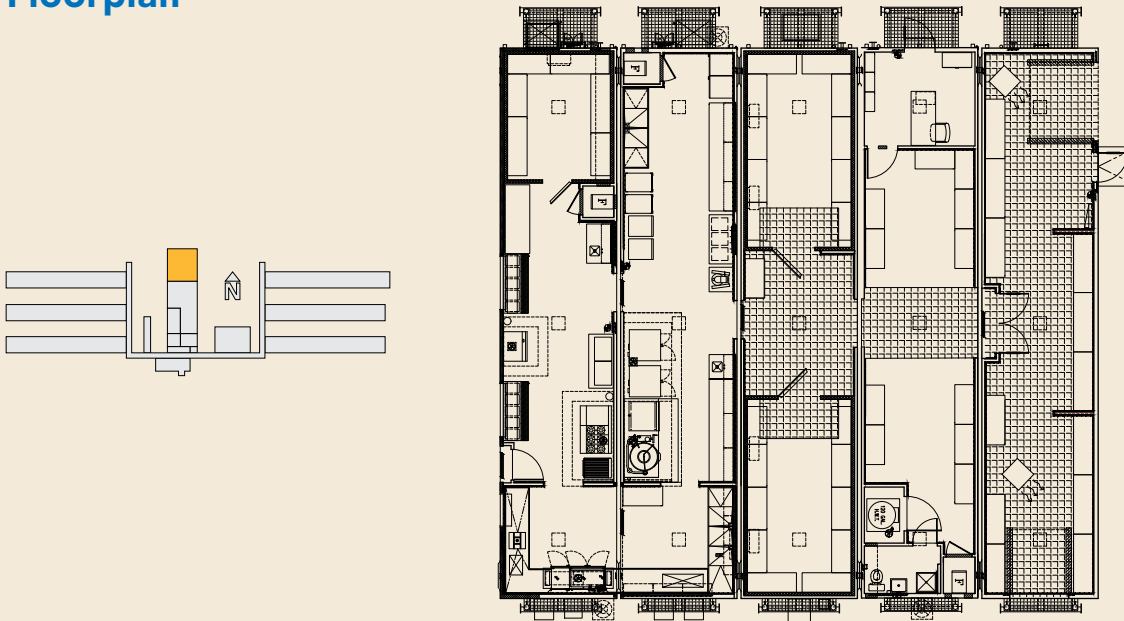
COMMERCIAL KITCHEN

Features & Specifications*

- 3,406 ft² food production and storage space
- HVAC features MUA's, forced air heating, and exhaust hoods
- Fire suppression systems
- Walk-in coolers and freezers
- Racking and storage systems
- Food prep equipment (ovens, steamers, broilers, tilting kettles, ranges, deep fryers, etc.)
- Dish-washing equipment (in-feed/out-feed tables, commercial dish/pot washers, pre-rinse station, slot dish carts, etc.)

**Comprehensive listing of features, furnishings, and equipment with detailed specifications available on request.*

Floorplan





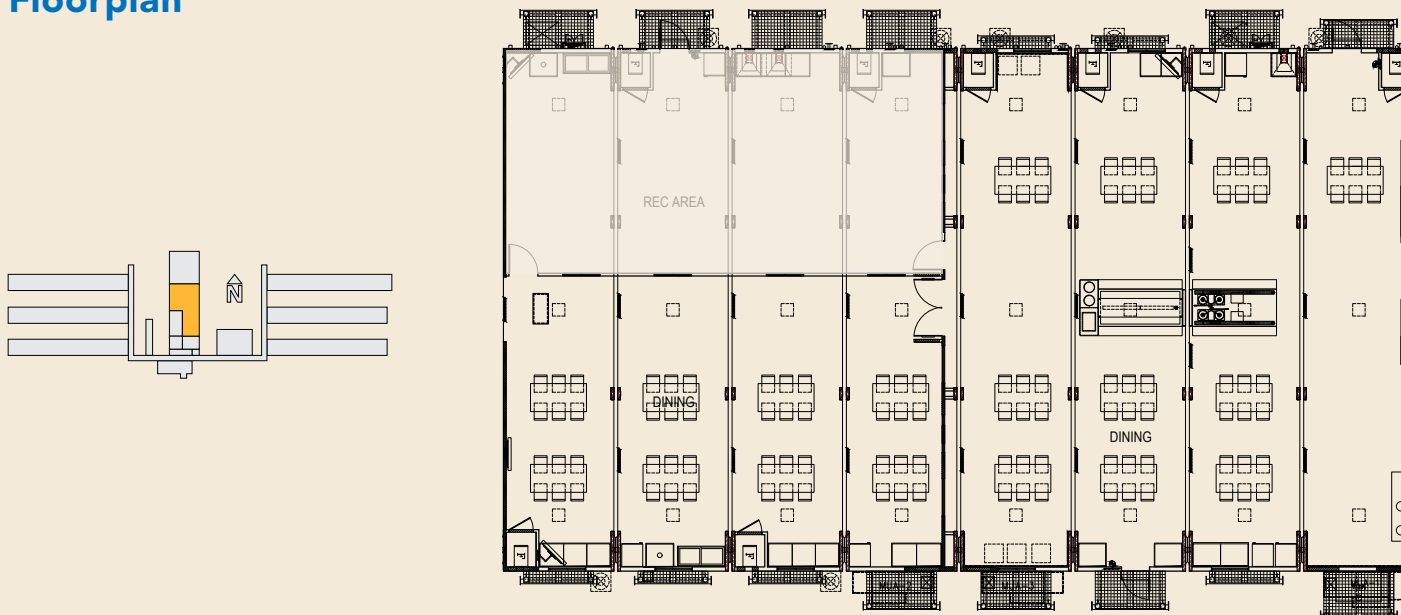
DINING ROOM

Features & Specifications*

- Seating Capacity: 160+ people per sitting
- 4,318 ft² total dining space
- 1,145 ft² of flexible recreation space
- Dining tables, chairs, and booth seating
- One (1) hot/cold buffet lines with drop-in food warmers/coolers
- Beverage dispensers (pop, juice, milk, coffee, etc.)
- Ice cream freezers

**Comprehensive listing of features, furnishings, and equipment with detailed specifications available on request.*

Floorplan





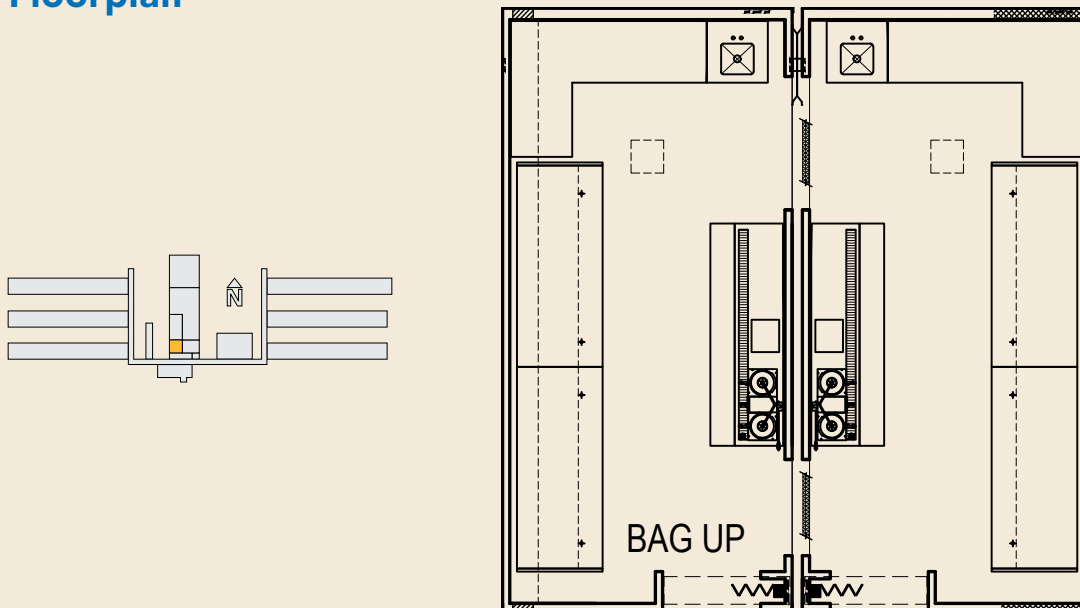
BAG-UP ROOM

Features & Specifications*

- 576 ft² adjacent to Dining Room
- Cooler display cases
- Beverage dispensers (pop, juice, milk, coffee, etc.)
- Ice machine
- Mill work countertops with base cabinets

**Comprehensive listing of features, furnishings, and equipment with detailed specifications available on request.*

Floorplan





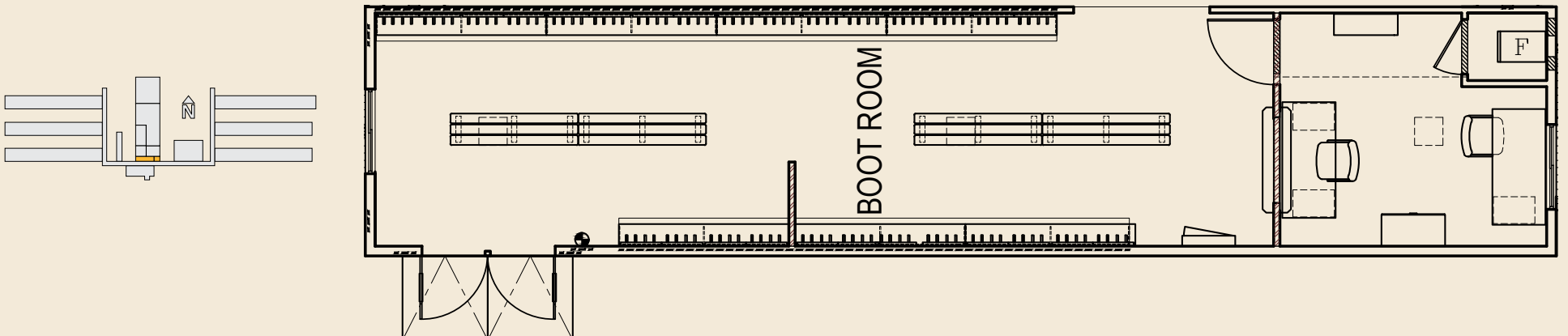
BOOT ROOM & OFFICE

Features & Specifications*

- 662 ft² adjacent to Dining Room
- Outerwear stalls and book racking
- Enclosed office space with two (2) workstations

**Comprehensive listing of features, furnishings, and equipment with detailed specifications available on request.*

Floorplan





8-UNIT KITCHEN-DINER (STAND-ALONE COMPLEX)

Features & Specifications*

Dining Room/Servery

- Seating Capacity: 138+ people per sitting
- 2,034 ft² total dining space
- Dining tables and chairs
- Beverage dispensers (pop, juice, milk, coffee, etc.)
- Ice cream freezers
- Mill work countertops with base cabinets

Commercial Kitchen

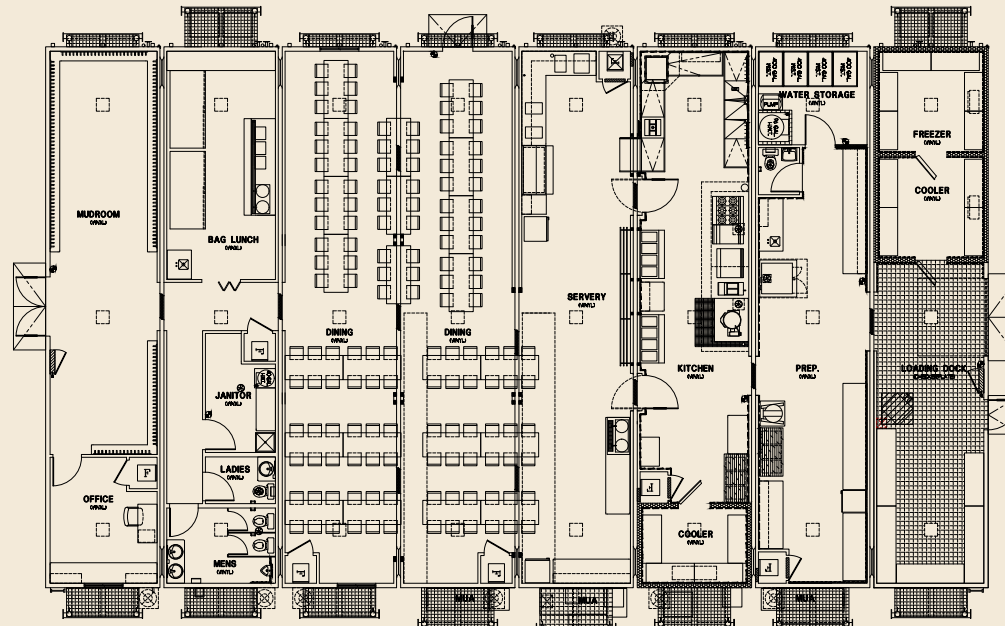
- 2,034 ft² food production and storage space
- HVAC features MUA's, forced air heating, and exhaust hoods
- Fire suppression systems
- Walk-in coolers and freezers
- Racking and storage systems
- Food prep equipment
- Dish-washing equipment

Common Area Spaces

- Mud Room
- Bag-Up Room
- Office
- Washrooms (mens/womens)

*Comprehensive listing of features, furnishings, and equipment with detailed specifications available on request.

Floorplan



DORMITORY CONFIGURATIONS

25-PERSON EXECUTIVE ROOM DORMITORY

Features & Specifications

- 25 Executive rooms per dorm, one (1) dorm on property
- Single-story
- Private ensuite
- Wheelchair accessible room configurations
- Lockable storage
- Workstation
- Blackout curtains
- Engineered for extreme climates
- Walls engineered to reduce noise transfer
- Individual temperature control
- Internet access via LAN hookup
- LCD TV with satellite hookup
- Laundry facilities
- Ability to complex several dormitories and common-area facilities together with arctic corridors to create temporary fleet lodge
- 8 legal loads to transport one dormitory

Executive Suite Dimensions

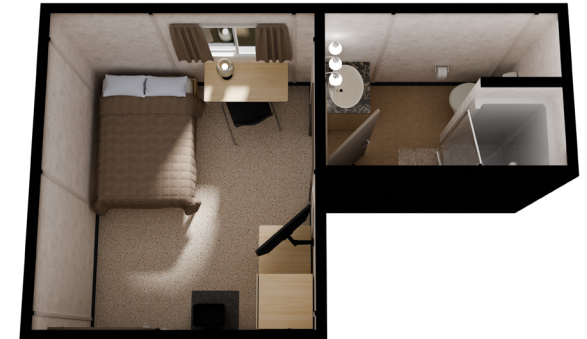
- Total Area: 226 ft²
- Bedroom Area: 166 ft² (15'-0" x 11'-1")
- Bathroom Area: 60 ft² (5'-4" x 11'-1")



**Room renderings are conceptual representations only and subject to variances.*

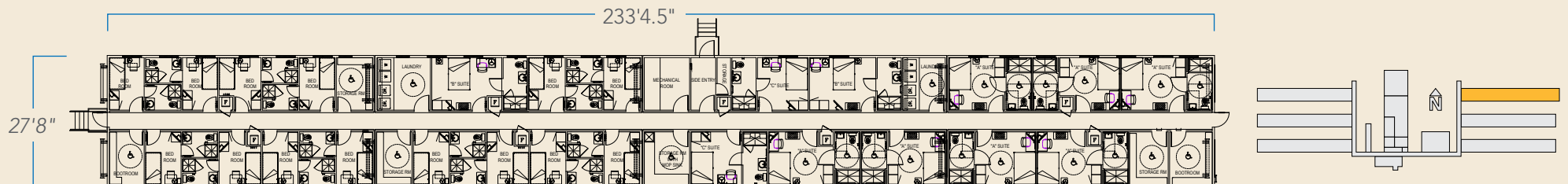
Standard Suite Dimensions

- Total Area: 131 ft²
- Bedroom Area: 88 ft² (8'-0" x 11'-1")
- Bathroom Area: 43 ft² (7'-9" x 5'-6")



**Comprehensive listing of features, furnishings, and equipment with detailed specifications available on request.*

Dorm Floorplan





42-PERSON SEMI-PRIVATE CRAFT ROOM DORMITORY

Features & Specifications

- 42 rooms per dorm, six dorms (6) on property (336 total rooms)
- Single-story
- Shared Jack & Jill en-suite
- Engineered for extreme climates
- Walls engineered to reduce noise transfer
- In-suite lockable storage
- In-suite workstation
- 39" x 80" bed
- Individual temperature control
- Internet access via LAN hookup
- LCD TV with satellite hookup
- Laundry facilities
- Ability to complex several dormitories and common-area facilities together with arctic corridors to create temporary fleet lodges
- Eight (8) legal loads to transport one dormitory

Room Dimensions

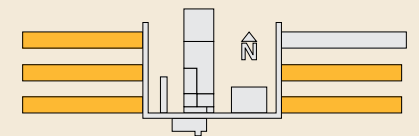
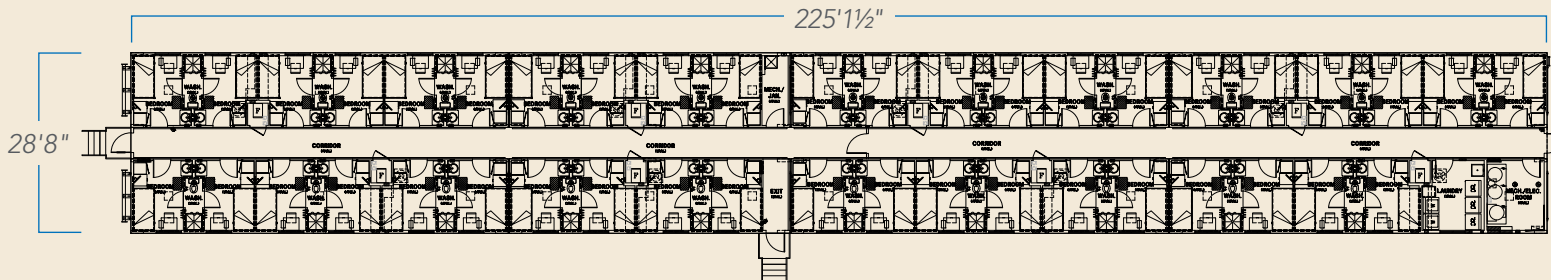
- Total Area: 120 ft²
- Bedroom Area: 90 ft² (8'-1" x 11'-0")
- Bathroom Area: 29 ft² (3'-0" x 11'-0")



**Room renderings are conceptual representations only and subject to variances.*

**Comprehensive listing of features, furnishings, and equipment with detailed specifications available on request.*

Dorm Floorplan



UTILITIES INFRASTRUCTURE

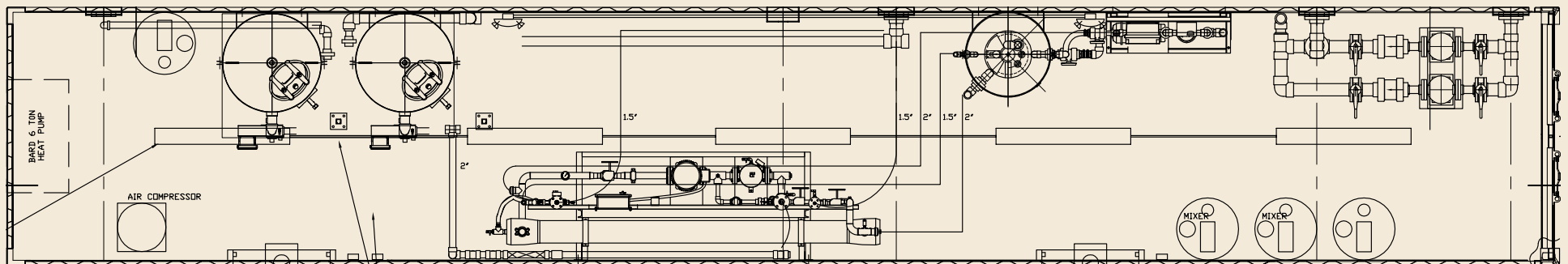
CULLIGAN WATER TREATMENT PLANT

Features & Specifications*

- 8' x 48' high cube container assembly
- Six (6) ton heat pump
- Dual pump control panel
- Air compressor
- Temperature control

**Comprehensive listing of features, furnishings, and equipment with detailed specifications available on request.*

Configuration



RELOCATION SUPPORT

In addition to the sale of lodge assets, Civeo can also provide scope of works to support the dismantle, trucking, border customs, installation, maintenance, and ongoing servicing at project sites anywhere in North America.



For more information, please contact:

In USA:

Ken Ferguson

Vice President, Business Development USA

713.303.3386

Ken.Ferguson@civeo.com

In Canada:

Mike Ames

Director, Sales

825.967.1535

Mike.Ames@civeo.com

